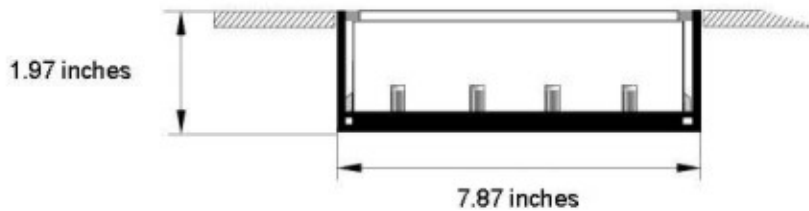
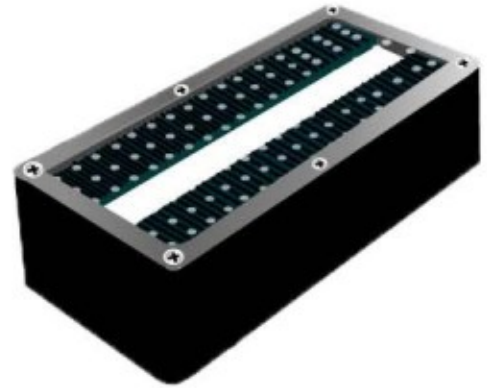


SH180C Specification



Solar-powered Brick

General

| | |
|-----------------|---|
| Size | Edge length: 7.87 inches x 3.94 inches / 200mm x 100mm Height: 1.97 inches / 50 mm |
| Weight | 2.31 lbs / 1.05 Kgs |
| Housing | Stainless Steel(SUS304), cast aluminum |
| Lens | Bayer super light-permeability PC |
| Lighting output | Permanent |
| LED pcs | 4 pcs |

Operational

| | |
|------------------|--|
| Switch | Auto |
| Operation time | Up to 10 hours(Sunny day) 4~6 hours(Cloudy day) |
| Full charge time | 6 hours |

Environmental

| | |
|-----------------------|------------------------------|
| Compressive Strength | 9902lbs (minimum) / 4456 Kgs |
| Operating Temperature | -4°F~140°F/-20°C~60°C |
| Storage Temperature | -13°F~176°F/-25°C~80°C |
| Moisture Protection | IP68 |

SH180C Specification

Solar-powered Brick

LEDs

| | |
|----------------------------|---------------|
| LED life time* | 100000 hours |
| LED intensity (mcd)* | 3000~7000 mcd |
| LED luminance (Lux)* | 30-300Lux |
| LED power consumption (W)* | 1.8V-3.3V |

*Remark : Specifications item depend on LED colors.

Solar Panel

| | |
|------------|----------------------------|
| Type | Crystalline panel 2V 200mA |
| Efficiency | 12%~15% |

Power storage

| | |
|-----------|--------------------------|
| Type | Ultracapacitor 2.3V 360F |
| Life Time | 10 years |

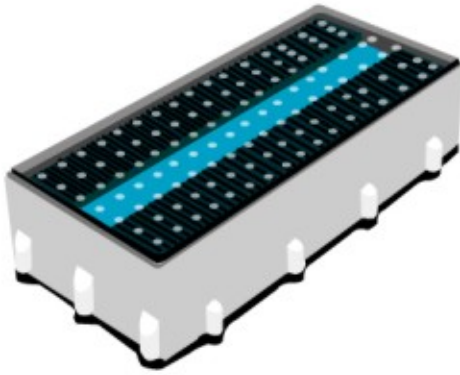
Listing

| | |
|---------------|----------|
| Certification | CE, RoHs |
|---------------|----------|

Color

| | |
|----------|-----------|
| ● White | SH-180C-W |
| ● Yellow | SH-180C-Y |
| ● Red | SH-180C-R |
| ● Blue | SH-180C-B |
| ● Green | SH-180C-G |

SH180 Solar Brick Instruction Manual

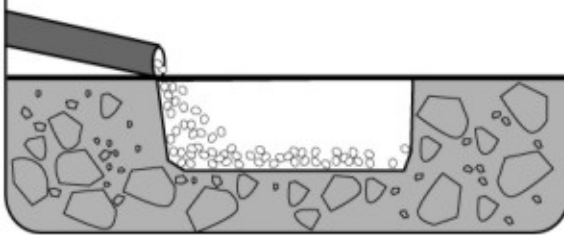


This solar light is one of high-tech and solar photoelectric product. It have excellence on environmental protection green, safe, can broadly apply in public locations such as road, square, garden etc.

In the daytime, when sun irradiate on the surface of light, the solar cell of light will bring electric energy and charge for storage component. In the evening, the light will work automatically and illuminate the lamp-house shining.

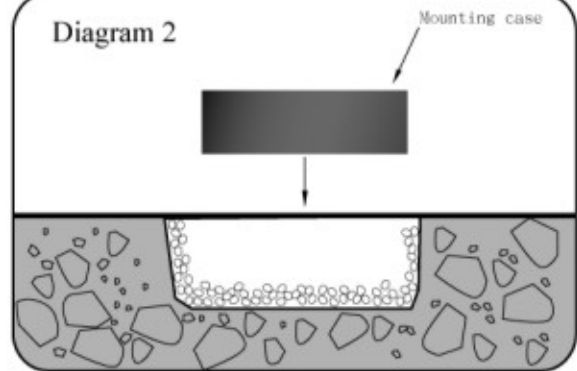
Installation method

Diagram 1



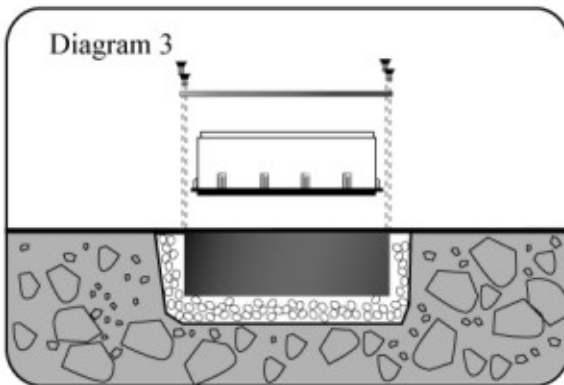
1. Dig a hole on ground and fill with proper amount of grout.

Diagram 2



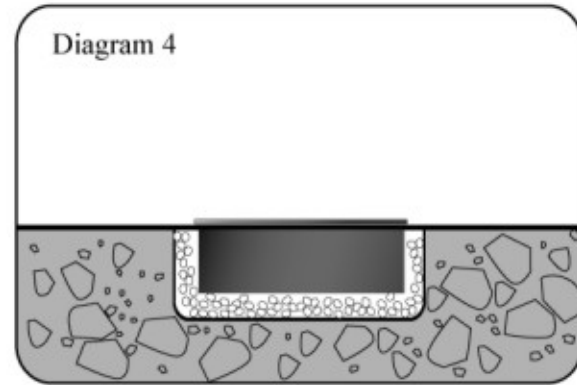
2. Put the mounting case inside the hole, and install on the same level as ground surface.

Diagram 3



3. After the cement become dry, clean up cement that has filter into the mounting case, and then put light into the mounting box, and fix up it by cover the stainless steel on the mounting box and fasten it by stainless steel bolt.

Diagram 4



4. Light installation is finished.

Remark: we put a little magnet on the brick in order to save power of the battery inside during long distance transport and storage. When user install the brick, just remove the magnet and the brick will work automatically.