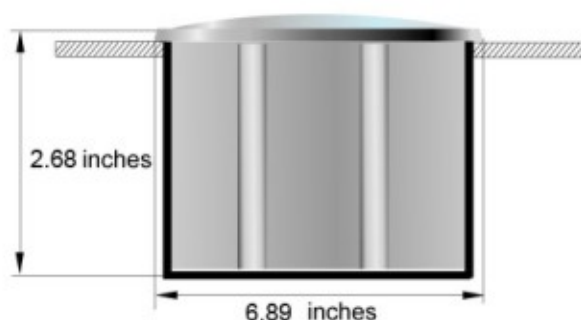


SH210C Specification



Solar-powered Brick

General

| | |
|-----------------|---|
| Size | Diameter : 6.89 inches / 175 mm Height : 2.68 inches / 68 mm |
| Weight | 3.08 lbs / 1.4Kgs |
| Housing | Stainless Steel(SUS304), cast aluminum |
| Lens | Bayer super light-permeability PC |
| Lighting output | Permanent |
| LED pcs | 6 pcs |

Operational

| | |
|------------------|--|
| Switch | Auto |
| Operation time | Up to 12 hours(Sunny day) 4~6 hours(Cloudy day) |
| Full charge time | 6 hours |

Environmental

| | |
|-----------------------|-------------------------------|
| Compressive Strength | 2818 lbs / 1281 kgs (minimum) |
| Operating Temperature | -4°F~140°F / -20°C~60°C |
| Storage Temperature | -13°F~176°F/-25°C~80°C |
| Moisture Protection | IP68 |

SH210C Specification

Solar-powered Brick

LEDs

| | |
|----------------------------|---------------|
| LED life time* | 100000 hours |
| LED intensity (mcd)* | 3000~7000 mcd |
| LED luminance (Lux)* | 30-300Lux |
| LED power consumption (W)* | 1.8V-3.3V |

*Remark : Specifications item depend on LED colors.

Solar Panel

| | |
|------------|------------------------------|
| Type | Crystalline panel 2.5V 130mA |
| Efficiency | 12%~15% |

Power storage

| | |
|-----------|--------------------------|
| Type | Ultracapacitor 2.3V 360F |
| Life Time | 10 years |

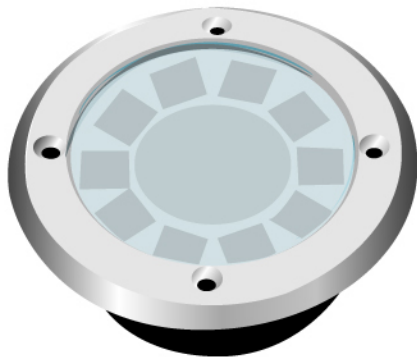
Listing

| | |
|---------------|----------|
| Certification | CE, RoHs |
|---------------|----------|

Color

| | |
|----------|-----------|
| ● White | SH-210C-W |
| ● Yellow | SH-210C-Y |
| ● Red | SH-210C-R |
| ● Blue | SH-210C-B |
| ● Green | SH-210C-G |

Solar Ground Light SH210 series Instruction Manual

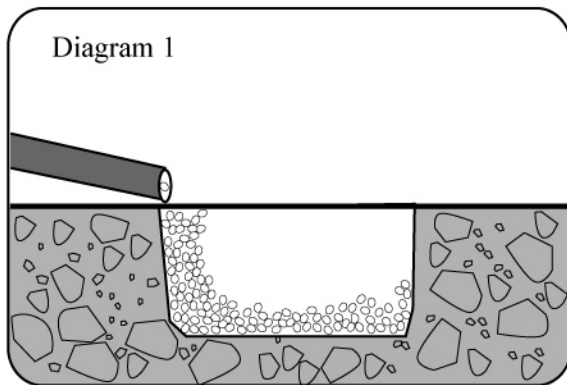


SH210 series Solar Ground Light is a green and environment-friendly product. The solar panel converts sunlight into electric energy and then charges the battery during daytime.

The light shall be installed in a place where the best sunlight can be located and the surface of solar panel shall be placed in the best direction in order to accept the maximum sunlight.

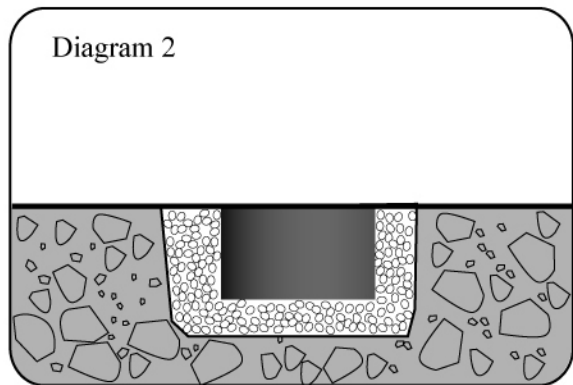
Installation method

Diagram 1



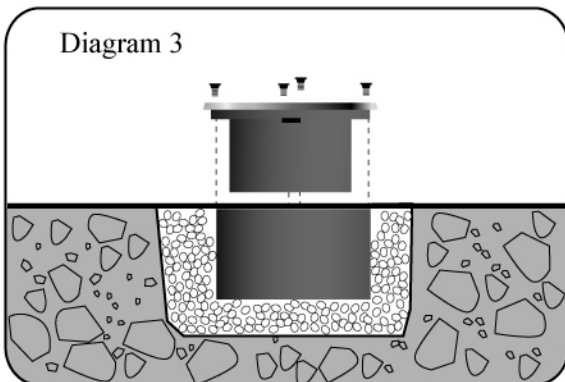
1. Dig a hole on ground and grout it.

Diagram 2



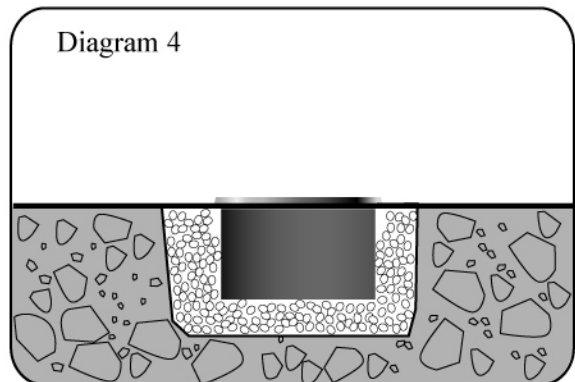
2. Put the mounting box inside the hole and level it with ground.

Diagram 3



3. After the grout become hard, put the light inside the mounting box and fix them together with 4 pieces of stainless steel bolts.

Diagram 4



4. The installation has been completed.

Remark: we put a little magnet on the brick in order to save power of the battery inside during long distance transport and storage. When user install the brick, just remove the magnet and the brick will work automatically.